

DESIGNER STEEL SERIES

The Designer Steel series features enhanced paint technology that eliminates the shine and glare of typical panels to create a rich, soft appearance, while still delivering the performance and durability of steel. The Designer Series perfect for any roofing or siding application.



DOVER GRAY



KNIGHTS ARMOR



SANDY CLAY



SMOKY SABLE

- Available in 4 popular colors
- Low shine matte paint system
- Cool Chemistry Technology for energy efficiency
- Zinc pre-treatment
- UL 2218 Class 4 Hail Resistance
- UL 790 Class A Fire Resistance
- UL 580 Class 90 Wind Uplift
- Structural strength ASTM-A653
- Coil coating “paint” process ASTM-A755

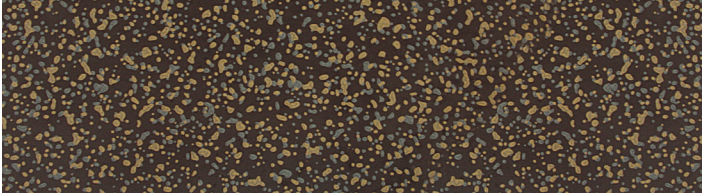
For complete details on Underwriters Laboratory product certifications see www.ul.com

Note: Color chips show approximate tone. Color of actual product may vary.
Final color approval should be made with actual material.

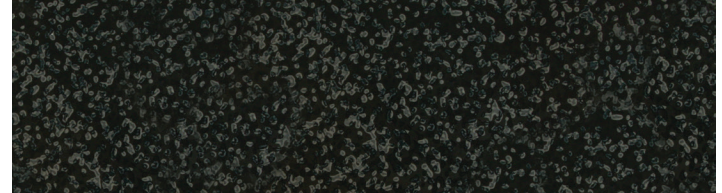


Residential STEEL ROOFING

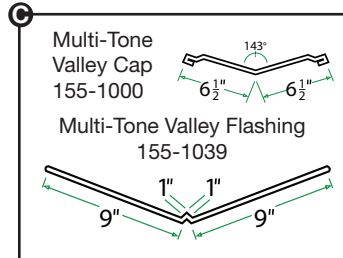
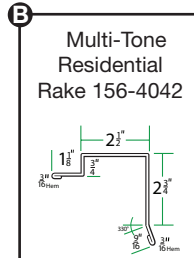
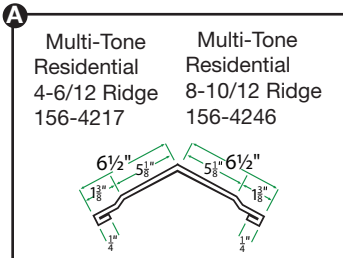
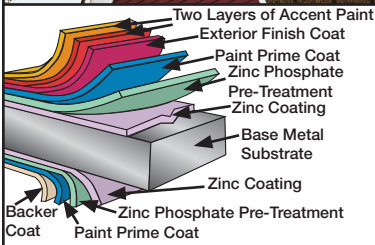
Limited Lifetime Warranty



WOODLAND TIMBER



TWILIGHT BLACK

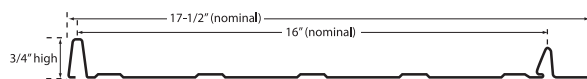


- Available in 2 Multi-Tone Finishes
- 3 Layers of Paint to Create a Textured Look
- Trim available for Ridge, Rake and Valley
- Zinc pre-treatment
- Grade 80 (full hard steel)
- 100,000 p.s.i. nom. tensile strength
- UL 2218 Class 4 Hail Resistance
- UL 790 Class A Fire Resistance
- UL 580 Class 90 Wind Uplift
- Structural strength ASTM-A653
- Coil coating "paint" process ASTM-A755

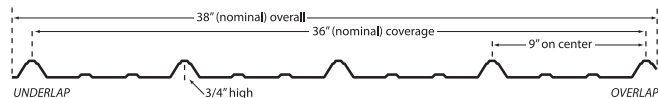
For complete details on Underwriters Laboratory product certifications see www.ul.com

28 Gauge Panel
Actual .0157" minimum thickness before painting
.018" nominal thickness after painting
G-100 Galvanized Coating plus Zinc Phosphate
Limited Lifetime Paint Warranty

HIDDEN FASTENER PANEL



EXPOSED FASTENER PANELS



LIFETIME HIDDEN FASTENER PANEL
-The best features rolled into one snap lock panel
-Features a concealed fastener, standing seam look
-Limited Lifetime Paint Warranty
155-9820-9821

LIFETIME EXPOSED FASTENER PANEL
-The best choice in a through fastener panel
-Structural panel design
-Limited Lifetime Paint Warranty
155-9415-9416

Note: Color chips show approximate tone. Color of actual product may vary. Final color approval should be made with actual material.