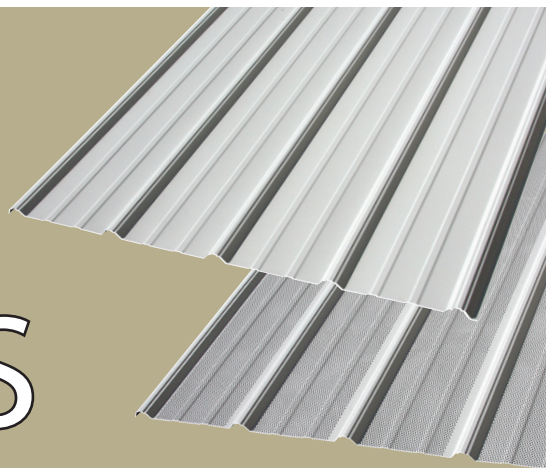


*Interior*

# STEEL WALL & CEILING PANELS

*The Easy Way to Finish Your Project*





## Helpful Tools



Panel	Dead Load (based on frame spacing)										
	2 ft	2.5 ft	3 ft	4 ft	5 ft	6 ft	7 ft	7.5 ft	8 ft	9 ft	10 ft
Dura Panel	98.3	50.3	29.1	12.3	6.3	3.6	2.3	1.9	1.5	1.1	0.8
Pro-Rib	147.5	75.5	43.7	18.4	9.4	5.5	3.4	2.8	2.3	1.6	1.2
Premium Pro-Rib	196.7	100.7	58.3	24.6	12.6	7.3	4.6	3.7	3.1	2.2	1.6

Measurements in Pounds Per Square Foot

## Ceiling Installation



**1**

Install the J-Trim or large J-Trim with frieze around the perimeter of the ceiling along the bottom cord. Attach to the sidewalls with screws.



**2**

First panel will slide into the J-trim and will run perpendicular to the ceiling joists. Always start at a corner with the overlap side toward the wall.



**3**

Fasten panels by screwing through the flat, next to each rib at every ceiling joist.



**4**

If multiple panels are needed to complete the first row of ceiling liner, overlap the first panels end by 6".



**5**

On the overlapped ends, install a screw on either side of each rib into the ceiling joist. Use this method for all end laps until the first row has been installed.



**6**

Begin the next row of steel panels installing the overlap rib onto the first panel installed. Fasten screws into the flat, next to each rib at every ceiling joist.



**7**

Install stitch screws into the overlapped rib 2' on center. This will attach the two steel panels together, creating a stronger ceiling liner.



**8**

Repeat steps 5-7 until ceiling is completed.

## Wall Installation



**1**

Install J-trim if Large J-trim with Frieze was not installed with the ceiling liner. If using J-trims for the corner, install before panel installation.



**2**

Start the first panel in a corner with the overlap side of the steel toward the corner.



**3**

Fasten panels by screwing through the flat into studs at 2' on center.



**4**

Overlap next panel and install stitch screws through the overlapped ribs.



**5**

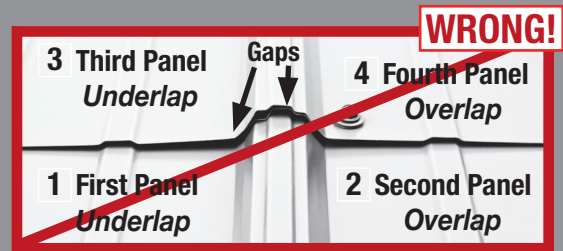
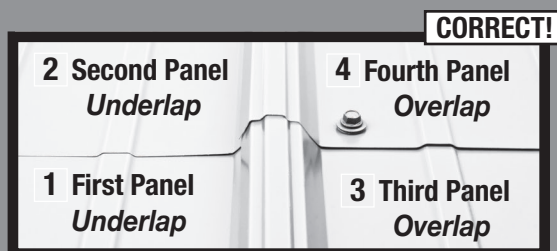
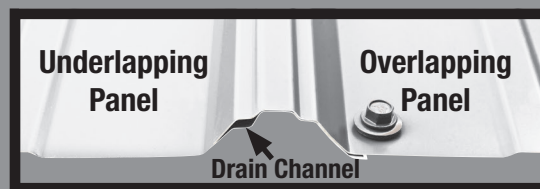
Repeat steps 2-4 for each wall until building is fully lined.



**6**

Cover corners with Inside Corner Trim if J-trim was not installed.

## Installation Order





## Dura-Panel Liner Panel

- Economically Priced
- Easy Installation
- Brightens up the Garage
- Saves Energy and Heat Loss
- 3X Lighter than Sheetrock
- Easy to Keep Clean
- Maintenance Free Interior
- Matches Pro-Rib Configuration
- Stronger and significantly More Durable than Sheetrock
- 15 Year Paint Warranty
- 30 Gauge

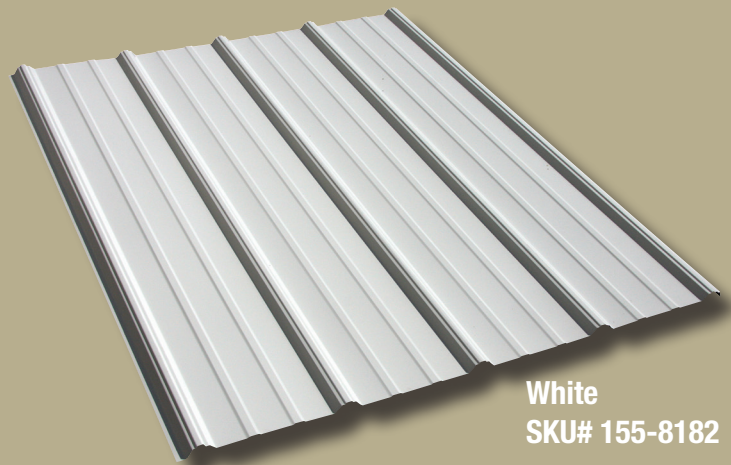


White  
SKU# 155-8085

Galvanized  
SKU# 155-8080

## Pro-Rib Liner Panel

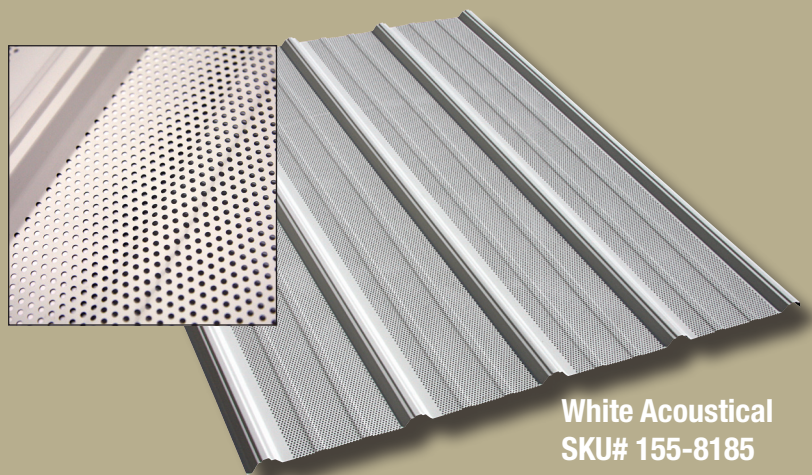
- Easy Installation
- Saves Energy and Heat Loss
- 3X Lighter than Sheetrock
- Easy to Keep Clean
- Maintenance Free Interior
- Limited 40 Year Paint warranty
- Stronger and significantly More Durable Than Sheetrock
- Available in 25 colors
- 29 Gauge



White  
SKU# 155-8182

## Perforated Liner Panel

- Allows sound waves to escape into your attic and walls
- Matches Pro-Rib Configuration
- Virtually maintenance free
- 29 Gauge Steel
- Easy Installation
- Saves Energy and Heat Loss
- 3X Lighter than Sheetrock
- Easy to Keep Clean
- Maintenance Free Interior
- Stronger and significantly More Durable than Sheetrock



White Acoustical  
SKU# 155-8185